



LINVEST RESEARCH

MARKET NEWSLETTER

Lininvest Chart Chat (143) Sept 16, 2016 Weekly Update

By Lin Yingjun

Last Friday, the U.S. equity market tanked in advance of a potential Sept. 2016 interest rate hike. If such a hike happens—and it is likely to happen in the next little while—it may result in a 15%-18% depreciation in \$SPY. As such, all indicators are now going into “sell mode.” However, I see the price of the SPY, QQQ, and IWM indices are well-managed, designed to close at the threshold of their support. That said, this correction is healthy and creates yet other opportunity for the bull to buy the good name of companies’ common shares at their major support. At this point, I mark \$210 and \$198 as the support zone for the next week. Seasonally-speaking, Sept. and Oct. are not good months for the bull. Volatility will remain extremely high from Nov. to early Dec. and then the market preforms its Santa Rally into Jan.

The Options Equity Put/Call Ratio chart (see: Chart 2, \$CPCE) has turned upwards with \$VIX breaking \$14: these are bearish signals to equity market. I added XIV to the \$VIX chart to show that the trend of XIV is opposite to VXX. One can go long on XIV if \$VIX is down. We shall keep close eye on key economic data releases (e.g., inflation rate, employment numbers), access to which may be found at <https://biz.yahoo.com/c/e.html>.

TLT gapped down with visible targets of \$132, \$128 and \$126. When the TLT goes down, TBT goes up and investors can consider to long TBT. Options are also available to TLT.

Bank stocks (C, JPM, GS BAC) and the U.S. dollar (ETF: UUP) will be benefit from an interest rate hike.

The price of Gold will be impacted by interest rate hikes. Therefore, I have marked \$1300/ounce as a key support level. However, if this level is broken, support for Gold will likely fall to a target of \$1250. Nevertheless, I expect that it will bounce from a level of \$1250. So, the price of Gold remains bullish in the longer term and a conservative investor might consider going long \$GDX and \$GDXJ instead of 3X ETF.

Interest rate hikes will also impact the price of Crude Oil and I expect the price of crude will remain in the \$39 to \$50 trading range until next spring.

The long-term trend and posture of Natural Gas is bearish, but it is oversold as winter approaches and brings with it increased usage. The tentative price of Natural Gas is between \$3 and \$4. The price pattern for UNG—a creditable exchange-traded fund—is currently forming around the \$7.5 to \$8.5 zone. Every dip in the price of UNG would be a good time for the bull to accumulate it. In the meantime, investors can trade \$DGAZ to hedge their UNG position from time to time. I see \$12 as the tentative target for UNG in the next few months.

The Shanghai composite (\$SSEC) has been on an uptrend from its low of \$2650-ish and is currently meeting its resistance of \$3102 where its 200 dma is. A decisive move above this level will indicate that China's equity is moving into a long-term bullish period and is on its way to targeting a range of \$3300 to \$3680. If the price falls below its 200 dma, it would suggest there is more work to be done for a leg-up, with supports at \$2900, \$2800 and \$2650.

That's it for this week. Thanks for reading and good trading with your plan!

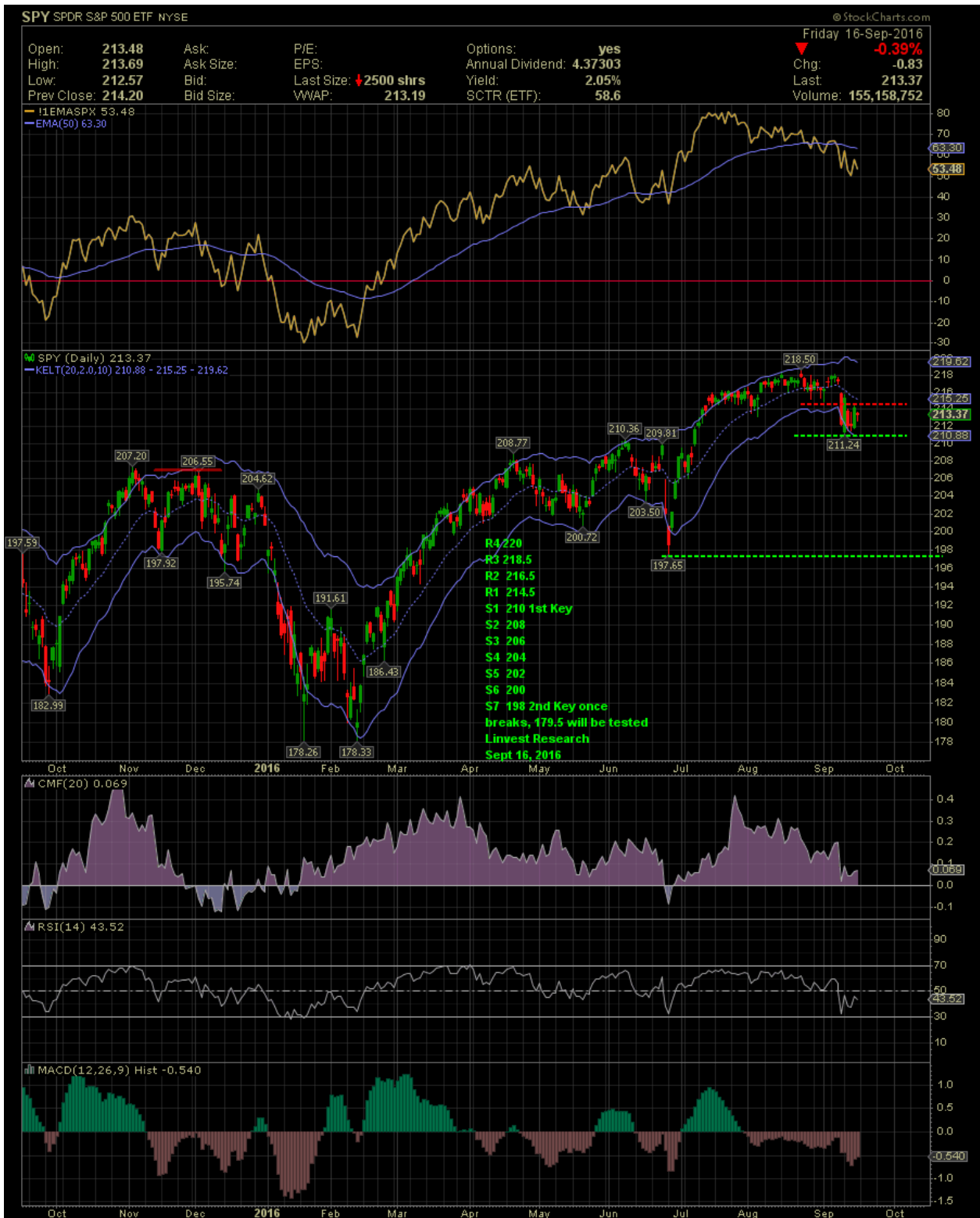


Chart 1

\$CPCE CBOE Options Equity Put/Call Ratio (EOD) INDX

© StockCharts.com

16-Sep-2016

Open 0.65 High 0.65 Low 0.65 Close 0.65 Chg -0.05 (-7.14%) ▼

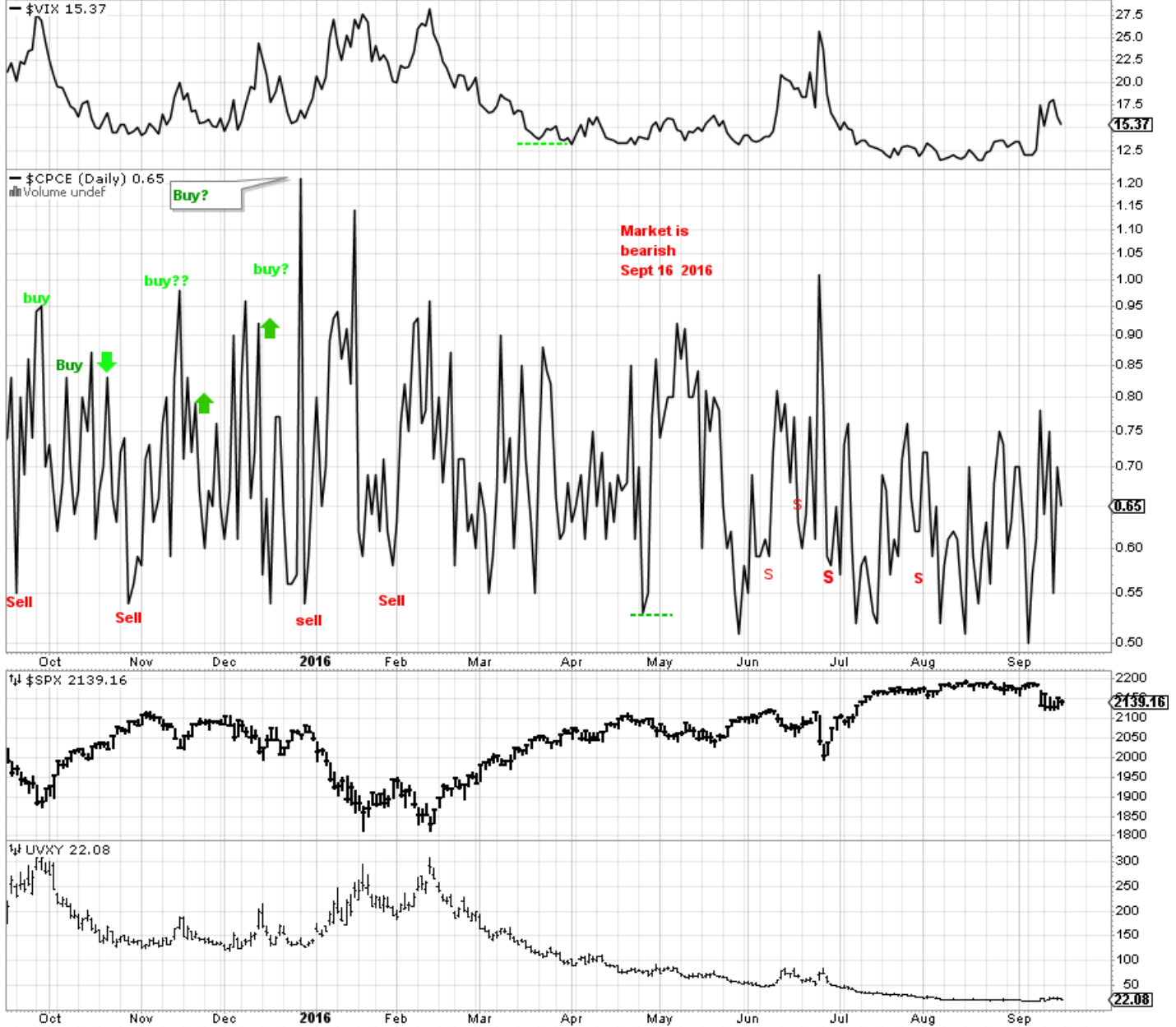


Chart 2



Chart 3

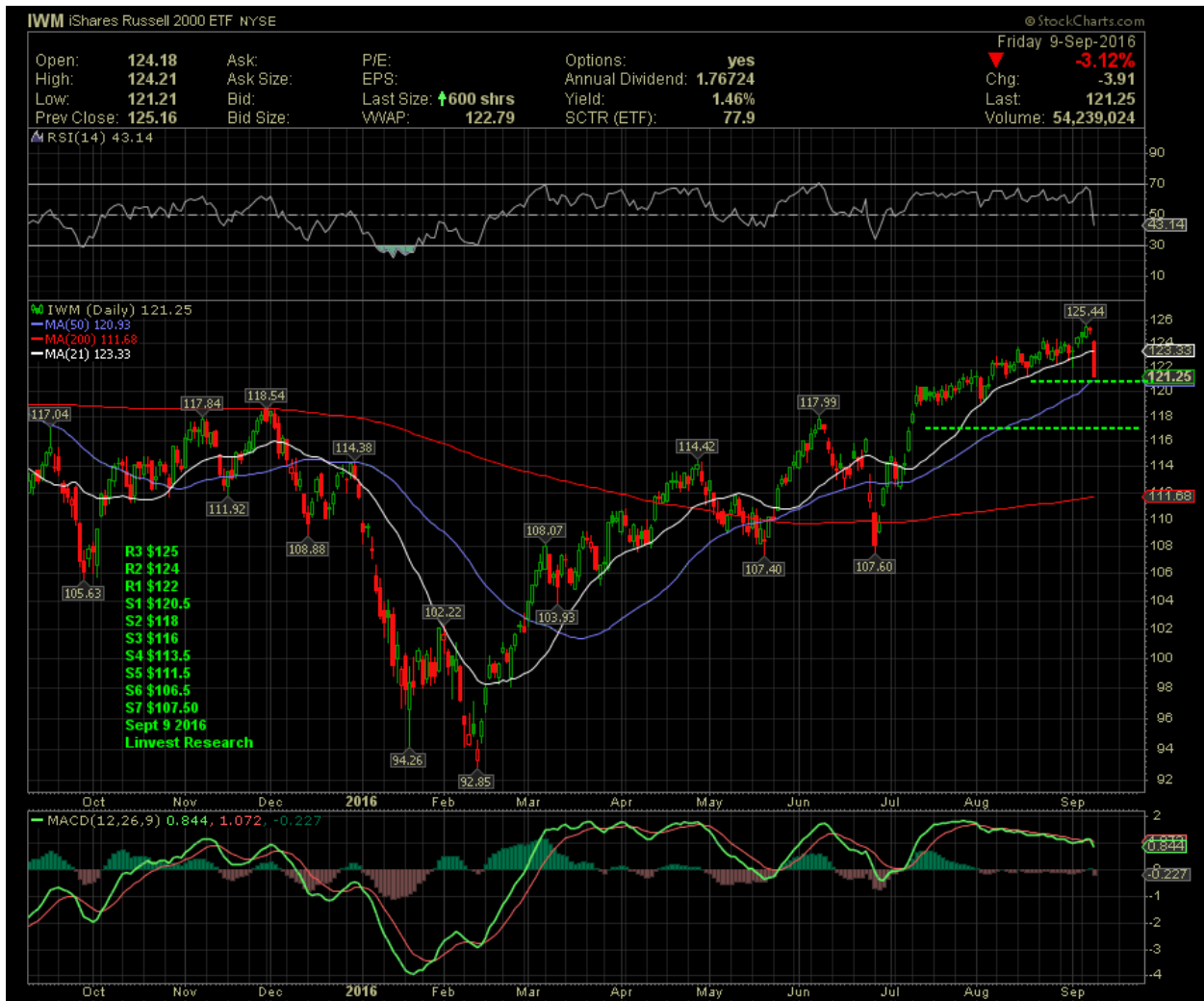


Chart 4



Chart 5

TLT iShares 20+ Year Treasury Bond ETF Nasdaq GM

© StockCharts.com

16-Sep-2016

Open 134.58 High 134.81 Low 134.22 Close 134.75 Volume 7.5M Chg +1.08 (+0.81%)

▲ RSI(14) 38.06

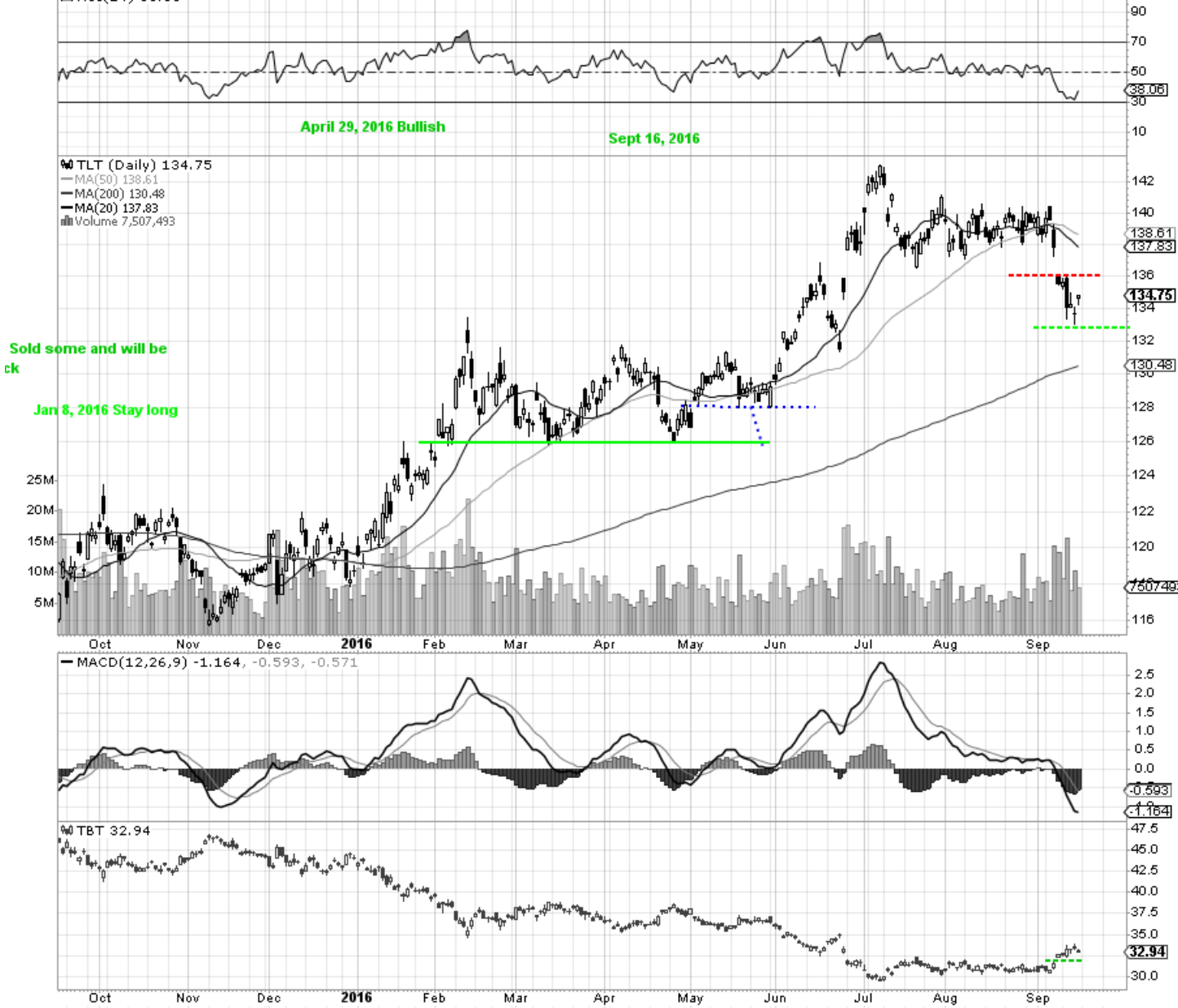


Chart 6

GLD SPDR Gold Shares NYSE

© StockCharts.com

16-Sep-2016

Open 124.81 High 125.25 Low 124.67 Close 125.06 Volume 19.0M Chg -0.31 (-0.25%)

RSI(14) 40.92



Chart 7

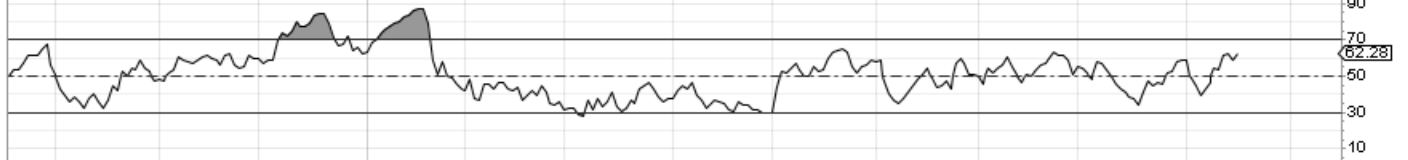
\$USDCAD US Dollar to Canadian Dollar (EOD) INDX

© StockCharts.com

16-Sep-2016

Open 1.316 High 1.325 Low 1.314 Close 1.322 Chg +0.007 (+0.52%) ▲

▲ RSI(14) 62.28



☞ \$USDCAD (Daily) 1.322

— MA(50) 1.303

— MA(200) 1.326

— MA(21) 1.301

▒ Volume undef

CAD rallies 1.34 is
resistance
May 13 2016



— MACD(12,26,9) 0.004, 0.001, 0.003

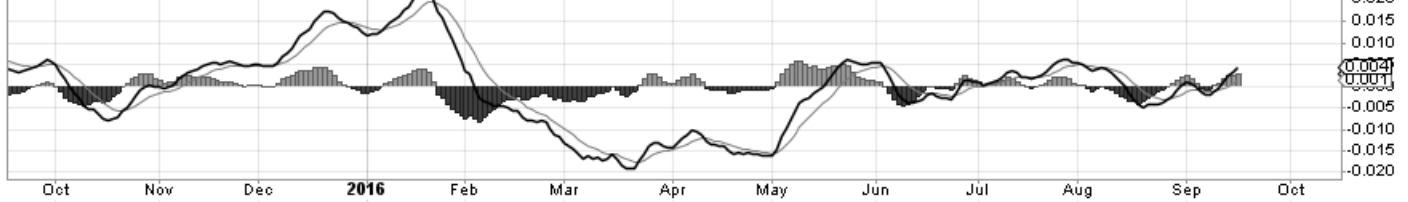


Chart 8



Chart 9



Chart 9-1

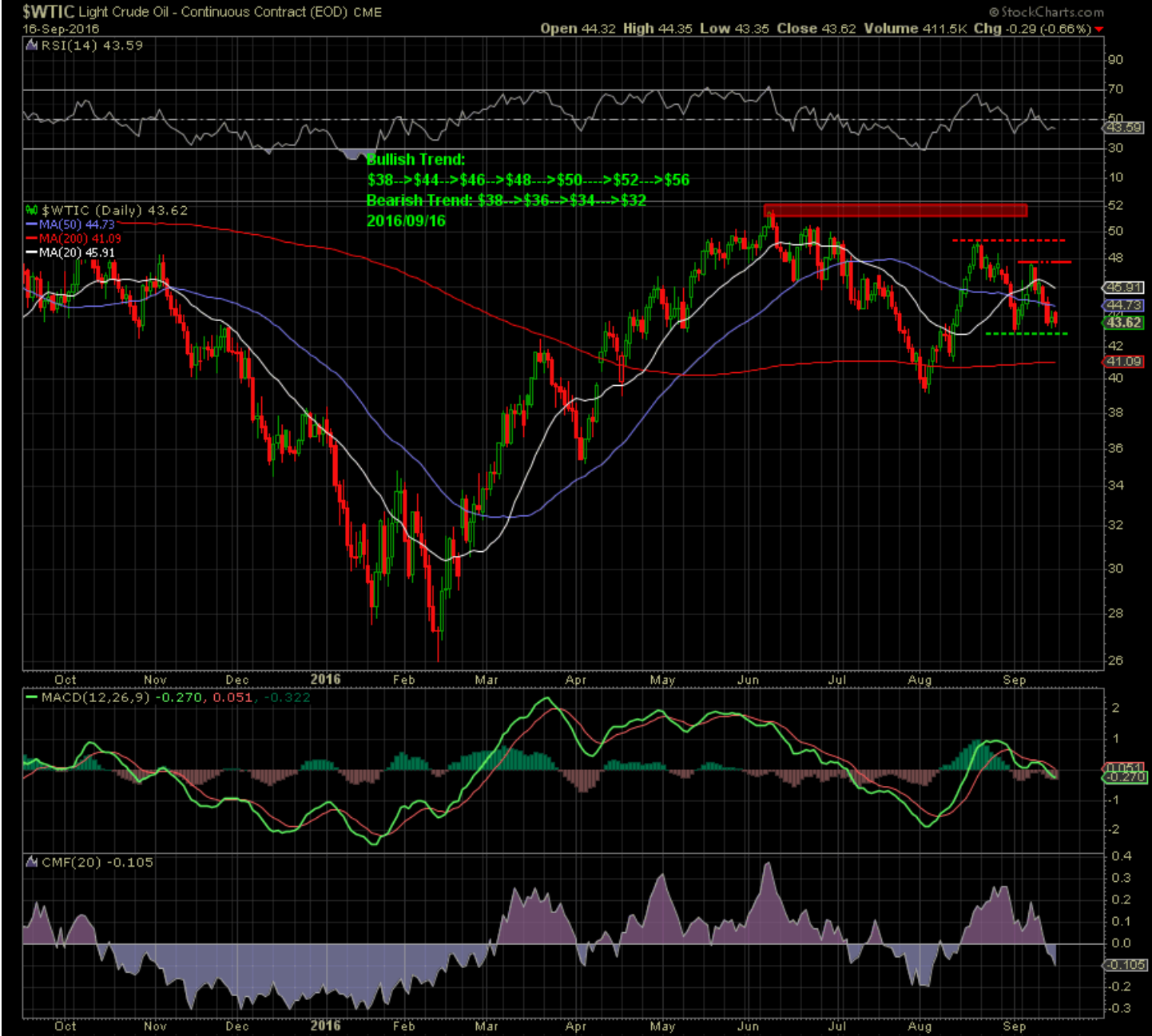


Chart 10



Chart 11

More intermediate-term trading ideas watch list (Long and short):

Leader stocks: AAPL ,GOOG, CMG, AMZN, ISRG,NFLX, PCLN, CF, FB,TWTR,TSLA,
Bio, health and Pharmaceutical: ACAD, AMPE,ADXS, ACHN, BIIB, ONVO, CRIS, CERS, INSM,TROV , PRTA, RMTI,RTPT, RGLS, NVTA
China Stock: BABA, VIPS, DL, EJ, FENG, JRJC , KNDI, WB, BIDU, XRS,DANG, XNET, YINN, YANG
Commodites: UNG, NGS, JO, SGG, USO, GDX,GDXJ, SLV, CORN, JNUG ,JDST
Energy and service sector: XLE, PDS, CLF, PBR, SWN, ALA.TO, SU, ECA, BTE, DO, UCO, XLE, SCO, DWTI
Solar Stocks: TAN, CSIQ, CSUN, TSL , SCTY, FSLR, JASO, SPWR
Precious metal,and mining companies: X, SMF.TO, GLD, EGO , CG.TO, IMG.TO, EDR.TO, SLW, NEM, SA ,
Prime : AKAM, BA, BX, CVU, MOS, LVS, KEM, HLF,WAG,WDAY, WHR,HSY, ED,
Airline, Cruise , hotel, restaurant: UAL, DAL, ALK, WJA.TO, AC.TO CCL, NCLH, RCL, EAT, MGM, LVS
Currency pair: EUR/USD: EUO, FXE; USD/CAD, CAD/USD, FXC

Green: stocks with long position.

Orange: stocks with long positions (small).

Red: stocks with short position.

Black: candidate stocks.

(**Note:** Some positions are not in the above list.)

Notable companies to report earnings and report this week include:

- Monday:
- Tuesday: ADBE FDX
- Wednesday: RHT BBBY
- Thursday: AZO RAD
- Friday:

US Change in Crude Oil Inventories 11:00 AM ET

Weekly Natural gas storage 10:30 AM ET

*Report date unconfirmed

Members, please feel free to send me a note or call if you would like to discuss any of the above (or other) stocks you are interested in. Please **pre-order Earning Trades** at least 2 days prior to stock earning report being issued. Thanks and good trading!

“Happiness is not something you postpone for the future; it is something you design for the present”. Jim Rohn

Linvest Research

https://twitter.com/LinYingjun
info@linvestresearch.com
www.linvestresearch.com

Disclaimer: Trading stocks, options, and futures carries high level of risk, and may not be suitable for all the investors. The information contained herein has been obtained from sources that we believe to be reliable but cannot guarantee its accuracy or completeness. Linvest Research's information does not take into account your investment objectives, financial situation, or needs. Past performance is not necessarily indicative of future results. The possibility exists that you could sustain a loss of some or all of your initial investment and therefore you should not invest money that you cannot afford to lose. Linvest Research, its principals, associates and employees (the researchers) will not be responsible for any losses incurred on investments made by you as a result of any information contained in this report. In addition, the information contained on this website or emails are not intended to be investment, legal, accounting, tax or other professional advice. Linvest Researchers may, from time to time, buy, own or sell securities mentioned herein.



©2016 Linvest Research All Rights Reserved